

IMPORTANT NOTES

Prior to beginning this install, or any installation, read the instructions thoroughly to familiarize yourself with the required steps.

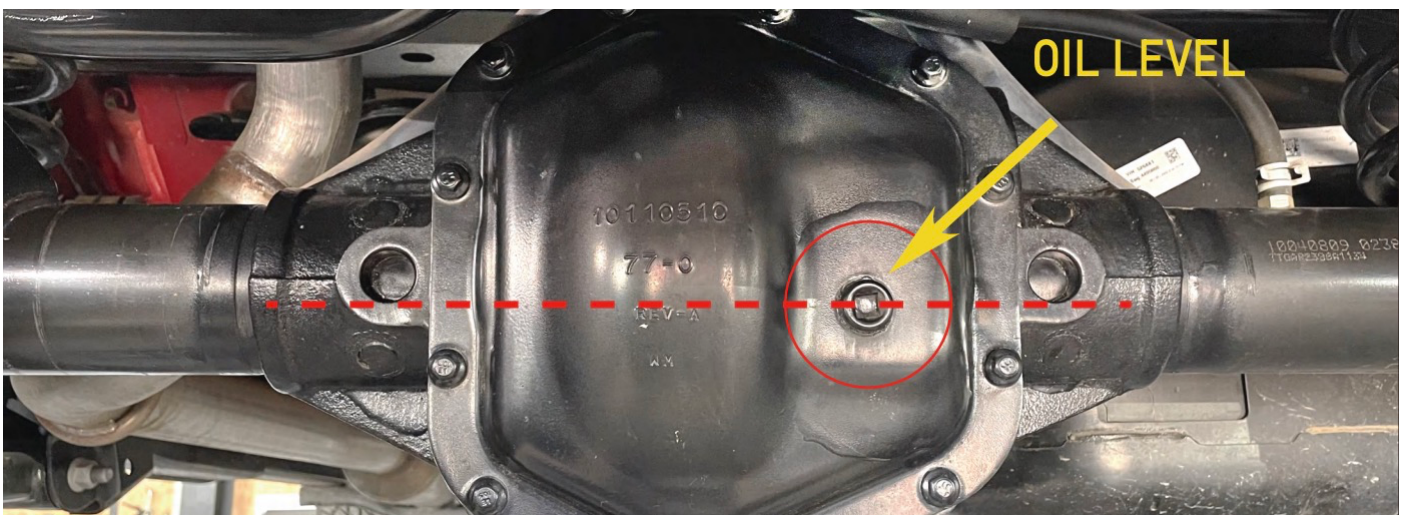
Refer to the parts list to ensure that all necessary components and hardware has been included.

If any parts are missing, please contact your local dealer for assistance.

NOTICE

1. Four fixing screws need to be tightened diagonally simultaneously to prevent oil seal deformation. 2. After replacing the rear axle shaft, you need to check the brake pads and brake discs simultaneously to avoid abnormal brake noise.

3. It is recommended to replace the axle oil with a new one, and make sure to fill it to the upper middle position of the oil injection port to avoid abnormal bearing wear caused by lack of oil or oil impurities.



*If your rear axle has a differential lock, you need to add gear oil marked 70w-140;

*If your rear axle does not have a differential lock, you need to add gear oil marked 80w-90;